

# Submarine Cables In The Straits of Malacca & Singapore

**COOPERATION FORUM #9**  
Yogyakarta, Indonesia  
26 – 27 September 2016

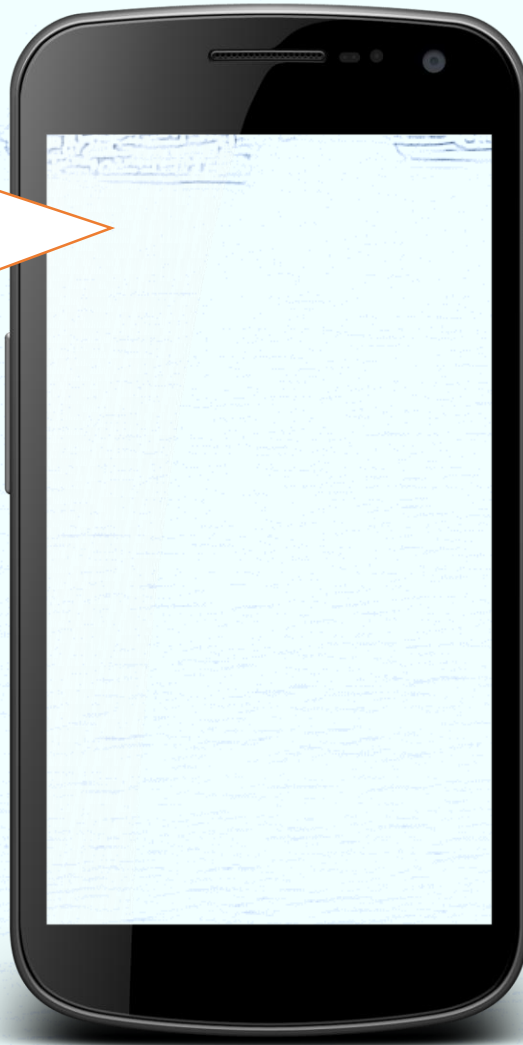




**An insight on submarine cable networks in the Straits of Malacca and Singapore and highlights its capabilities and significance.**

**Highlighting the impact of submarine cable faults and efforts made to protect the cable from external aggressions.**

**Nowadays,  
telecommunication  
plays an important  
role in our everyday  
life.....**





limited capacity, higher-cost & higher latency



LAND

LAND

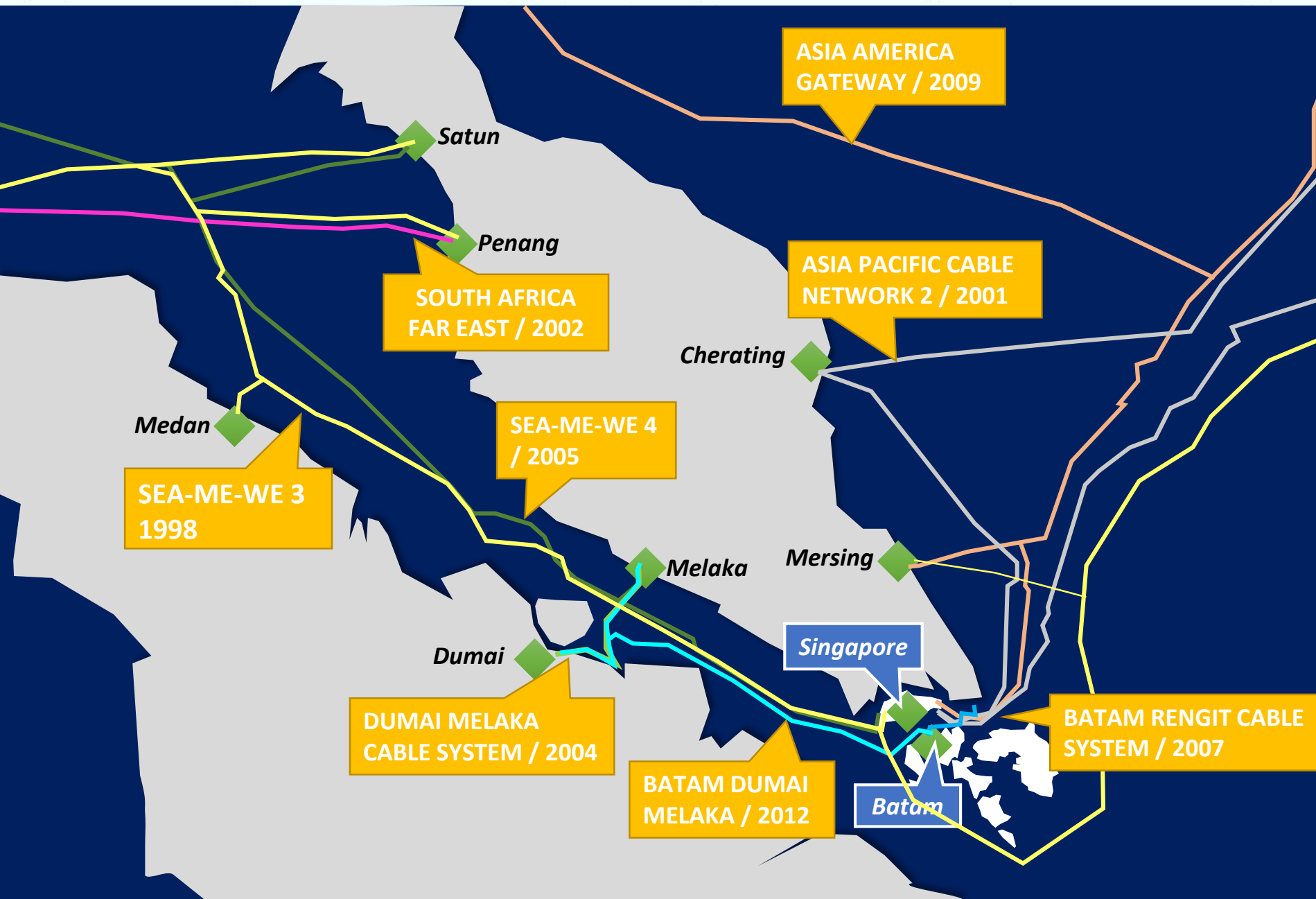
The majority (95%) of intercontinental telecommunication is done via submarine cable networks....



Capable of long haul, fast and high capacity inter-continental transmission of thousands of kilometers

**30 Terabits per second!**



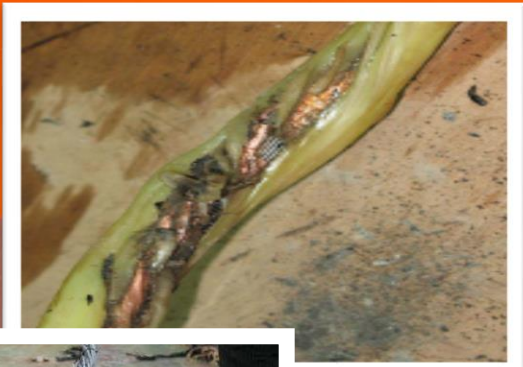


The Straits of Malacca and Singapore are two of the main water ways for submarine cable route....

Most of the cables are owned by consortiums formed by Telcos all around the world



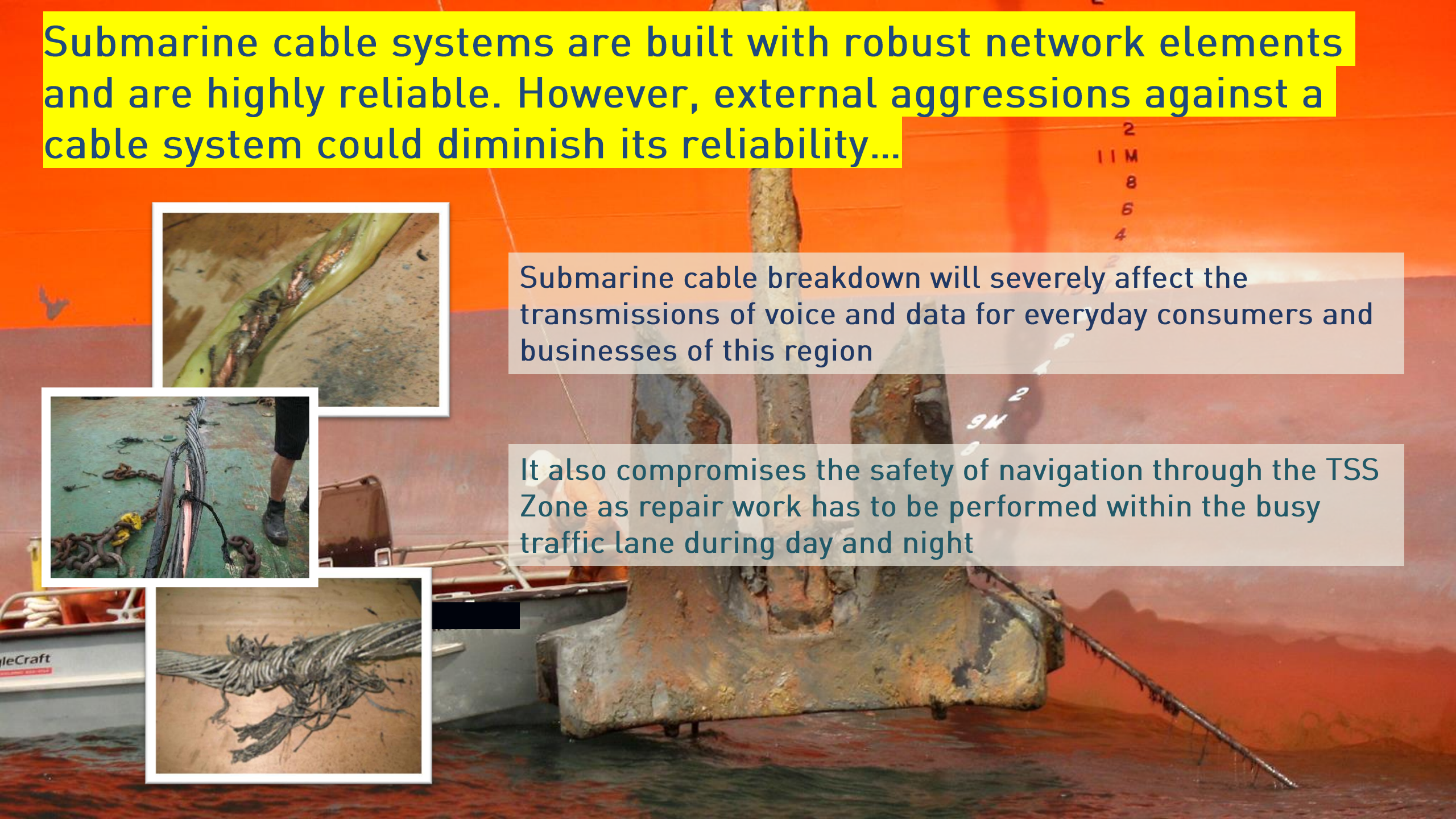
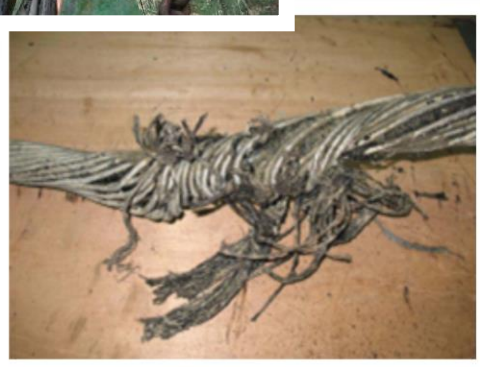
Submarine cable systems are built with robust network elements and are highly reliable. However, external aggressions against a cable system could diminish its reliability...



Submarine cable breakdown will severely affect the transmissions of voice and data for everyday consumers and businesses of this region



It also compromises the safety of navigation through the TSS Zone as repair work has to be performed within the busy traffic lane during day and night



# Efforts by cable consortium to continuously protect submarine cables in SOMS...

- Bury the cable as deep as possible during the construction of the cable
- Encourage its members to engage in cable awareness program with local authorities, fisheries union, shipping company and enforcement agency
- Install AIS based Vessel Tracking System
- Pursue damage claim
- Upgrade the VTS by installing surveillance camera



The background is a light blue illustration of a harbor scene. In the foreground, there are stylized waves. In the middle ground, several ships of different sizes are depicted, including a large cargo ship on the right and several smaller vessels. In the background, a bridge with multiple arches spans the water. The overall style is clean and modern.

# THANK YOU!